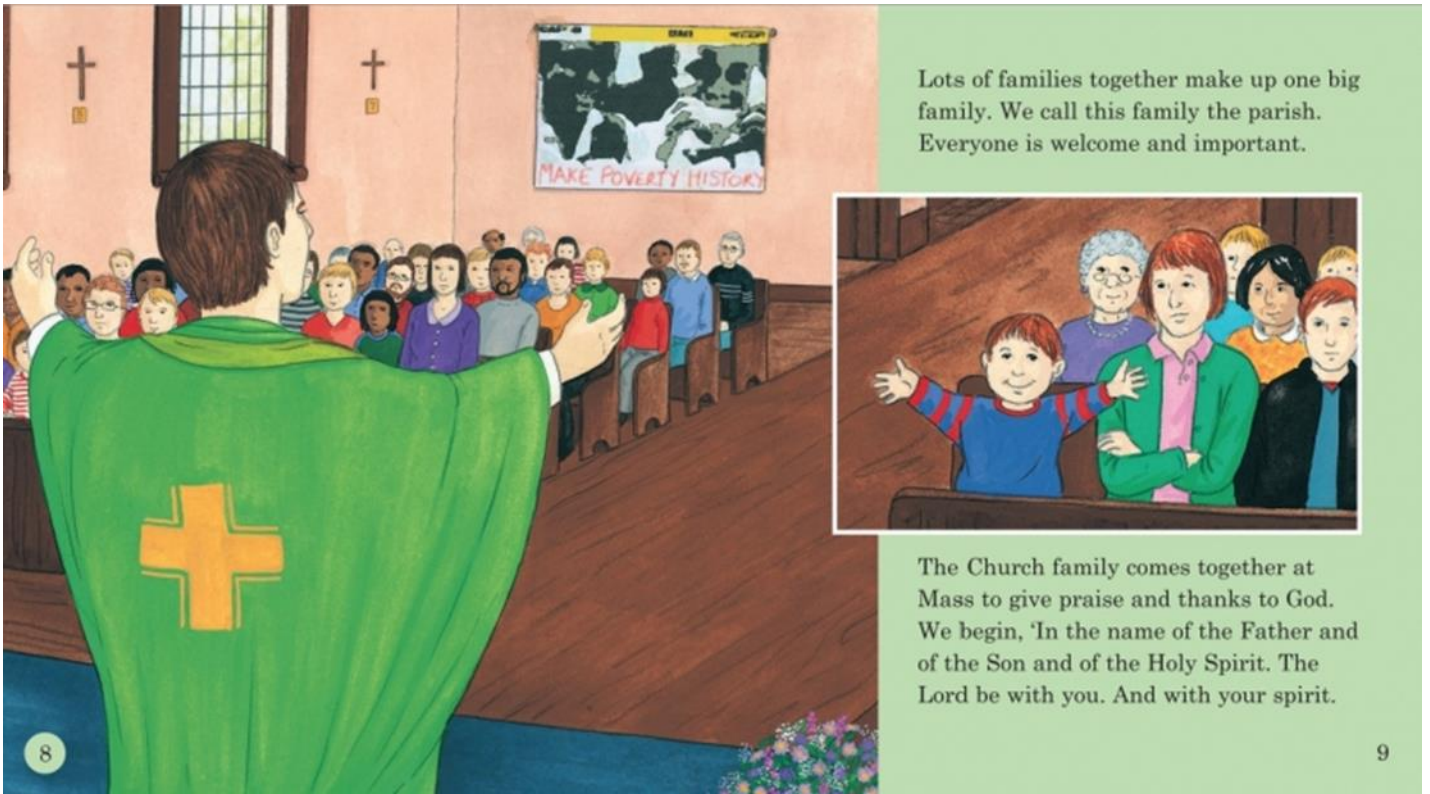


Look at the picture below.



The priest leads the parish family as they gather to celebrate Mass at church on Sunday.

The priest is a special person who has been chosen to do God's work.

The priest wears different coloured vestments according to the time of the Church's Year. Green is worn in Ordinary times.

As a gathering hymn is being sung the priest and the altar servers process through the church to the altar.

The priest, with everyone, makes the Sign of the Cross and says some words of welcome.

After looking at the picture, discuss these questions together. **Answers in red**

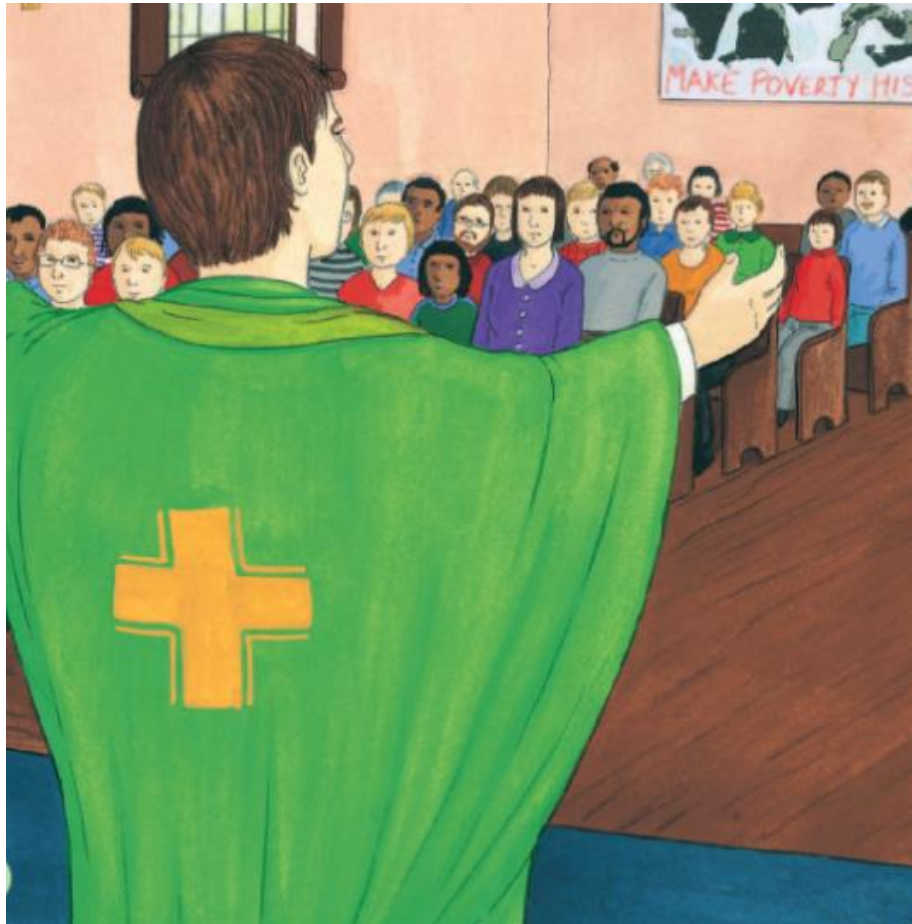
Q What is happening in this picture? **(They are at a church service)**

Q Which special person can you see? **(The priest)**

Q What is the priest wearing? **(A green vestment)**

Q What is the priest doing? **(Saying words of welcome)**

Task: Please complete the worksheet.



Which special person do you see?

What is he doing?
